



**SHIVRAJ**



HYDROPONICS INDIA

## PINEAPPLE GROWING AEROTOWER

# 32 PLANTS

LAYERS	4
SIZE	32 Inch
PLANTING	32
WATER PUMP	18 watt
WATER TANK	23 ltr

### PACKAGE DIMENSION

73 cm x 73 cm x 35 cm





HYDROPONICS INDIA

## PINEAPPLE GROWING AEROTOWER

# 40 PLANTS

LAYERS	5
SIZE	38 Inch
PLANTING	40
WATER PUMP	18 watt
WATER TANK	23 ltr

PACKAGE DIMENSION  
73 cm x 73 cm x 35 cm





HYDROPONICS INDIA

## PINEAPPLE GROWING AEROTOWER

# 48 PLANTS

LAYERS	6
SIZE	44 inch
PLANTING	48
WATER PUMP	18 watt
WATER TANK	23 ltr

PACKAGE DIMENSION  
73 cm x 73 cm x 35 cm





HYDROPONICS INDIA

## PINEAPPLE GROWING AEROTOWER

# 56 PLANTS

LAYERS	7
SIZE	50 Inch
PLANTING	56
WATER PUMP	18 watt
WATER TANK	23 ltr

PACKAGE DIMENSION  
73 cm x 73 cm x 35 cm





HYDROPONICS INDIA

## PINEAPPLE GROWING AEROTOWER

# 64 PLANTS

LAYERS	8
SIZE	56 Inch
PLANTING	64
WATER PUMP	35 Watt
WATER TANK	23 ltr

PACKAGE DIMENSION  
73 cm x 73 cm x 35 cm





HYDROPONICS INDIA

## PINEAPPLE GROWING AEROTOWER

# 72 PLANTS

LAYERS	9
SIZE	62 Inch
PLANTING	72
WATER PUMP	35 Watt
WATER TANK	23 ltr

PACKAGE DIMENSION  
73 cm x 73 cm x 35 cm





HYDROPONICS INDIA

## PINEAPPLE GROWING AEROTOWER

# 80 PLANTS

LAYERS	10
SIZE	68 Inch
PLANTING	80
WATER PUMP	35 Watt
WATER TANK	23 ltr

PACKAGE DIMENSION  
73 cm x 73 cm x 35 cm







HYDROPONICS INDIA

## PINEAPPLE GROWING AEROTOWER

# 88 PLANTS

LAYERS	11
SIZE	74 Inch
PLANTING	88
WATER PUMP	35 Watt
WATER TANK	23 ltr

PACKAGE DIMENSION  
73 cm x 73 cm x 35 cm





HYDROPONICS INDIA

## PINEAPPLE GROWING AEROTOWER

# 96 PLANTS

LAYERS	12
SIZE	80 Inch
PLANTING	96
WATER PUMP	35 Watt
WATER TANK	23 ltr

PACKAGE DIMENSION  
73 cm x 73 cm x 35 cm





HYDROPONICS INDIA

# PINEAPPLE GROWING AEROTOWER

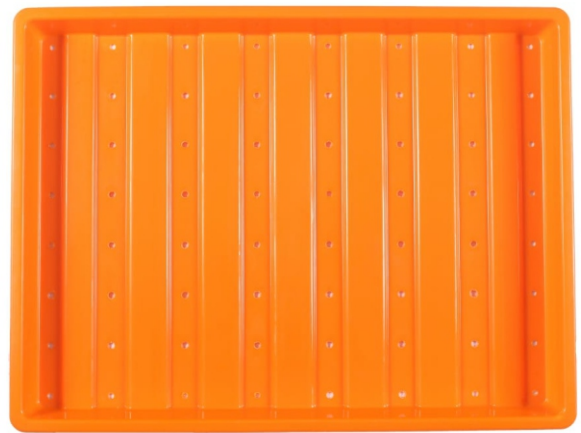
## ASSEMBLE MANNUAL





HYDROPONICS INDIA

## HYDROPONIC TRAY 1.5 ft x 2 ft



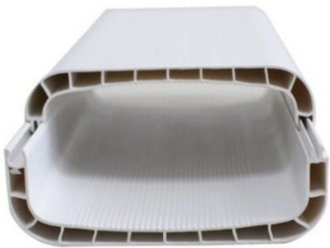
## HYDROPONIC TRAY 3 ft x 2 ft





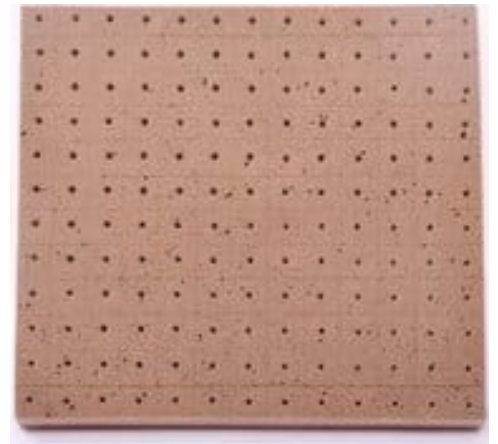
HYDROPONICS INDIA

## NFT CHANNEL 100x55 mm



NFT channel 100x55 mm

## OASIS CUBE



## NFT CHANNEL 100 mm X 80 mm - 100 mm X 50 mm





HYDROPONICS INDIA

## AUTO TIMER



## FILTER



## FOGGER





HYDROPONICS INDIA

## NET POT 3



## LATERAL PIPE 16 mm



## CLAY BALLS





HYDROPONICS INDIA

## GROW BAG



## DUTCH BUCKET



## LEAFY VEGETABLES NUTRIENT



## WATER PUMP







HYDROPONICS INDIA





HYDROPONICS INDIA

## GREEN FODDER SYSTEM

50 kg per day production

<b>MATERIAL</b>	<b>DESCRIPTION</b>	<b>UNITS</b>
Hydroponic Tray	1.5 ft x 2 ft	40
Rack GI		1
Fogger		50
Auto timer		1
Shed Net 90%		1
Filter		1
Lateral pipe	16 mm	1
Pump	0.5 HP	1
Plumbing material		
Area Required	8 ft x 6 ft	



HYDROPONICS INDIA

## GREEN FODDER SYSTEM

100 kg per day production

<b>MATERIAL</b>	<b>DESCRIPTION</b>	<b>UNITS</b>
Hydroponic Tray	1.5 ft x 2 ft	80
Rack GI		2
Fogger		90
Auto timer		1
Shed Net 90%		1
Filter		1
Lateral pipe	16 mm	1
Pump	1 HP	1
Plumbing material		
Area Required	14 ft x 10 ft	



HYDROPONICS INDIA

## GREEN FODDER SYSTEM

200 kg per day production

<b>MATERIAL</b>	<b>DESCRIPTION</b>	<b>UNITS</b>
Hydroponic Tray	1.5 ft x 2 ft	160
Rack GI		4
Fogger		175
Auto timer		1
Shed Net 90%		1
Filter		1
Lateral pipe	16 mm	1
Pump	1.0 HP	1
Plumbing material		
Area Required	14 ft x 16 ft	



HYDROPONICS INDIA

## GREEN FODDER SYSTEM

300 kg per day production

<b>MATERIAL</b>	<b>DESCRIPTION</b>	<b>UNITS</b>
Hydroponic Tray	1.5 ft x 2 ft	240
Rack GI		6
Fogger		250
Auto timer		1
Shed Net 90%		1
Filter		1
Lateral pipe	16 mm	1
Pump	(1.0 HP)SM	1
Plumbing material		
Area Required	14 ft x 24 ft	



HYDROPONICS INDIA

## GREEN FODDER SYSTEM

400 kg per day production

<b>MATERIAL</b>	<b>DESCRIPTION</b>	<b>UNITS</b>
Hydroponic Tray	1.5 ft x 2 ft	320
Rack GI		8
Fogger		340
Auto timer		1
Shed Net 90%		1
Filter		1
Lateral pipe	16 mm	1
Pump	(1.0 HP) SM	1
Plumbing material		
Area Required	14 ft x 30 ft	



HYDROPONICS INDIA

## GREEN FODDER SYSTEM

500 kg per day production

<b>MATERIAL</b>	<b>DESCRIPTION</b>	<b>UNITS</b>
Hydroponic Tray	1.5 ft x 2 ft	400
Rack GI		10
Fogger		420
Auto timer		1
Shed Net 90%		1
Filter		1
Lateral pipe	16 mm	1
Pump	(2.0 HP) SM	1
Plumbing material		
Area Required	14 ft x 36 ft	



HYDROPONICS INDIA

## GREEN FODDER SYSTEM

600 kg per day production

<b>MATERIAL</b>	<b>DESCRIPTION</b>	<b>UNITS</b>
Hydroponic Tray	1.5 ft x 2 ft	480
Rack GI		12
Fogger		500
Auto timer		1
Shed Net 90%		1
Filter		1
Lateral pipe	16 mm	1
Pump	(2.0 HP) SM	1
Plumbing material		
Area Required	24 ft x 24 ft	





HYDROPONICS INDIA

## GREEN FODDER SYSTEM

800 kg per day production

<b>MATERIAL</b>	<b>DESCRIPTION</b>	<b>UNITS</b>
Hydroponic Tray	1.5 ft x 2 ft	640
Rack GI		16
Fogger		650
Auto timer		1
Shed Net 90%		1
Filter		1
Lateral pipe	16 mm	1
Auto Valve	(2.0 HP) SM	2
Pump		1
Plumbing material		1
Area Required	24 ft x 24 ft	



HYDROPONICS INDIA

## GREEN FODDER SYSTEM

900 kg per day production

<b>MATERIAL</b>	<b>DESCRIPTION</b>	<b>UNITS</b>
Hydroponic Tray	1.5 ft x 2 ft	800
Rack GI		20
Fogger		820
Auto timer		1
Shed Net 90%		1
Filter		1
Lateral pipe	16 mm	1
Auto Valve		2
Pump	(2.0 HP) SM	1
Plumbing material		1
Area Required	24 ft x 40 ft	



HYDROPONICS INDIA

## GREEN FODDER SYSTEM

1000 kg per day production

<b>MATERIAL</b>	<b>DESCRIPTION</b>	<b>UNITS</b>
Hydroponic Tray	1.5 ft x 2 ft	960
Rack GI		24
Fogger		1000
Auto timer		1
Shed Net 90%		1
Filter		1
Lateral pipe	16 mm	1
Auto Valve		2
Pump	(2.0 HP) SM	1
Plumbing material		1
Area Required	24 ft x 45 ft	



HYDROPONICS INDIA

## GREEN FODDER SYSTEM

2000 kg per day production

<b>MATERIAL</b>	<b>DESCRIPTION</b>	<b>UNITS</b>
Hydroponic Tray	1.5 ft x 2 ft	1600
Rack GI		40
Fogger		1600
Auto timer		1
Shed Net 90%		2
Filter		1
Lateral pipe	16 mm	2
Auto Valve		4
Pump	(2.0 HP) SM	1
Plumbing material		1
Area Required	24 ft x 45 ft	



HYDROPONICS INDIA

## GREEN FODDER SYSTEM

4000 kg per day production

<b>MATERIAL</b>	<b>DESCRIPTION</b>	<b>UNITS</b>
Hydroponic Tray	1.5 ft x 2 ft	3200
Rack GI		80
Fogger		4000
Auto timer		1
Shed Net 90%		3
Filter		1
Lateral pipe	16 mm	4
Auto Valve		5
Pump	(2.0 HP) SM	1
Plumbing material		1
Area Required	50 ft x 70 ft	



HYDROPONICS INDIA

## GREEN FODDER SYSTEM

5000 kg per day production

<b>MATERIAL</b>	<b>DESCRIPTION</b>	<b>UNITS</b>
Hydroponic Tray	1.5 ft x 2 ft	4000
Rack GI		100
Fogger		5000
Auto timer		1
Shed Net 90%		4
Filter		1
Lateral pipe	16 mm	5
Auto Valve		8
Pump	(2.0 HP) SM	1
Plumbing material		1
Area Required	50 ft x 70 ft	